

English

Stories from familiar settings

Texts: Alfie stories by Shirley Hughes

I will say, write and punctuate simple and compound sentences using the joining words and, but, so and or

I will orally rehearse each sentence prior to writing.

I will develop stamina for writing in order to write at length.

I will write about fictional events.

I will use subordination for reason using because and if.

I will use the subordinating conjunction that in a sentence.



Art & Design Painting Flowers

Vincent Van Gogh & Claude Monet

I will name and use primary colours.

I will understand how colours mix to make secondary colours. I will know that artists can be inspired by flora and fauna around them.

Geography Human and Physical - Seaside

I will use a range of maps.

I will use compass directions (N,S,E & W) and locational language such as near, far, left and right.

I will make observations about features that give places their character.

I will name features found at the seaside.

Computing Programming A: Moving a robot

I will explain what a given command will do.

I will combine 'forwards' and 'backwards' commands to make a sequence.

I will plan a simple program.

I will test a simple program.

I will find more than one solution.



Curriculum Overview Class 2 Summer 1 2025 Mrs Ramsay & Mrs Bamber

RE

Y2 - 2.6 – Ascension & Pentecost

I will know that Ascension is when Jesus went back to heaven, forty days after the Resurrection.

I will know that the Holy Spirit came at Pentecost.

I will know that Christians believe that God is three in one – the Father, the Son and the Holy Spirit.

Y1 - 1.4 Jesus is Special

I will retell some of the stories of Jesus' miracles from the New Testament.

I will talk about my own experiences and feelings.



PSHE Rights and Respect

I will wash my hands correctly.

I will get help if someone has hurt themselves.

I will use strategies when I feel upset or angry.

I will ask for help from a trusted adult.



What if?

Bringing God into all our learning

What if we followed our 'moral compass'?
Where would it lead us?



Diamond 9

Creating Lifelong Learners

Challenge, Collaborative, Courage, Creativity,
Flourish, Independent, Inspirational, Relevant, Unique

Multicultural Links

What are the experiences of others?

How do our environments affect how we live,
play or travel?



British Values

Democracy, Individual Liberty, Mutual Respect,
Rule of Law, Tolerance of Different Faiths

Maths White Rose Maths



Fractions

I will recognise equal and unequal parts.

I will recognise and find thirds, halves & quarters.

I will recognise unit and non-unit fractions.

I will count in fractions up to a whole.

Time

I will recognise o'clock and half past.

I will find quarter to and quarter past.

I will tell the time to five minutes.

I will know the number of minutes in an hour and hours in a day.

Science Plants 2



I will talk about healthy plants and what one looks like.

I will name the things that I can do to help keep a plant alive.

I will name the parts of a seed that will grow.

I will talk about what a seed will need in order to grow.

I will draw a table and record data.

I will draw a simple graph. (Y2)

PE Games – Striking and Fielding

I will demonstrate an overarm throw for distance.

I will strike a ball for distance.

I will play a simple striking and fielding game.

I will use a simple tactic.

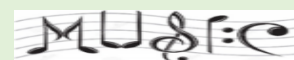


Music Nautilus

Cat and Mouse

I will use my voice to show expression through pitch and tone.

I will perform for an audience.



Spellings

Units 4 & 5

Little Wandle Spelling program.

Grammar

Prefix 'un' to change the meaning of words

Use 'ly' to change verbs into adverbs.

Using 'a' or 'an'

